

## Warranties

### FIVE YEAR LIMITED WARRANTY FOR METAL FRAME & CONSTRUCTION

Stoll Fireplace, Inc. warrants this product to the original retail purchaser against defects in the metal materials and workmanship for a period of five years from date of the original retail purchase. Stoll Fireplace, Inc. will replace, at no charge to the original retail purchaser, any part that fails due to a defect in materials or workmanship.

This warranty covers only parts and applies only to products purchased for consumer use. This warranty does not cover damage which occurs in transit or results from alteration, accident, misuse, abuse, or improper installation. It also makes no warranty as to maximum temperature and stresses which may cause discoloration of the brass. Stoll Fireplace, Inc. shall not be liable for consequential or indirect damages which are caused by defects in its product, by its repair or replacement. Some states do not allow the exclusion or limitation of incidental or consequential damages. In such cases, the exclusion or limitation may not apply.

The implied warranties of merchantability and fitness for a particular purpose which may arise under state law are also limited in duration to five years from the original purchase of this product. Some states do not allow such limitations, in which case this limitation may not apply.

### ONE YEAR LIMITED WARRANTY FOR ELECTRONICS

Stoll Fireplace, Inc. warrants this product to the original retail purchaser against manufacturing defects in the glass and electronics (*switches, motor, cord*) for a period of one year from date of the original retail purchase. Stoll Fireplace, Inc. will replace, at no charge to the original retail purchaser, any part that fails due to a manufacturing defect.

This warranty covers only parts and applies only to products purchased for consumer use. This warranty does not cover any damage which occurs in transit or results from alteration, accident, misuse, abuse, or improper installation. Neither does it cover glass damaged due to extreme heat, puncture, or other abuse; or damage to electronics due to faulty site wiring, incorrect installation, or extreme heat. Stoll Fireplace, Inc. shall not be liable for consequential or indirect damages which are caused by defects in its product, by its repair or replacement. Some states do not allow the exclusion or limitation of incidental or consequential damages. In such cases, the exclusion or limitation may not apply.

The implied warranties of merchantability and fitness for a particular purpose which may arise under state law are also limited in duration to one year from the original purchase of this product. Some states do not allow such limitations, in which case this limitation may not apply.

If you need to take advantage of these limited warranties during the warranted period, simply bring the part to your Stoll Fireplace, Inc. dealer for adjustment. Proof of the original purchase date will be required in order for you to take advantage of the limited warranty.

If you have questions or problems with your warranties, please contact us.

Stoll Fireplace, Inc | 153 Hwy. 201 | Abbeville, SC 29620  
800-421-0771 | [www.stollfireplaceinc.com](http://www.stollfireplaceinc.com)

#### Grate Heater Features

For wood-burning fireplaces

90/125 CFM variable speed blower

Thermostatic on/off fan control  
(turns on at 120°F and off at 90°F)

Blower Assembly can be on left or right side

40,000 estimated BTU



Publication #: 881



# Grate Heater

*For wood-burning masonry fireplaces*



## Owners Manual

*- Parts List, Installation, Operating Instructions, Warranties -*



# Grate Heater

For wood-burning masonry fireplaces

## Parts List

- 1 - Heat Grate Unit
- 1 - Blower Assembly
- 1 - Blower Vent Assembly
- 1 - 6' Cord
- 1 - Heat Transfer Bar w/ bolt
- 1 - Variable Speed Switch
- 1 - Adjustable Cover w/ end caps
- 1 - Hardware Pack  
*(1 Grommet & 4 Philips Head Screws)*

## Assembly

*Incorrect assembly or unheeded warnings could result in a damaged unit, or a serious fire and loss of life and property.*

**Refer to included photo addendum to aid in assembly.**

- **Step 1.** Unpack Heat Grate and identify all parts using Parts List and place Heat Grate Unit on a flat surface to prepare for assembly. Be sure to orient the unit with the manifold facing you. **(Fig. 1)**
- **Step 2.** The power cord can exit the unit on the left or right side. Determine which side is the best power source. The Heat Transfer Bar and Blower Assembly need to be installed on the side you choose.
- **Step 3.** Attach the Heat Transfer Bar (*“L” shaped metal bracket*) to front of Log Holder with small bolt and nut. **(Fig. 2)**
- **Step 4.** Remove cover from Blower Assembly. Place Blower Assembly on desired side of Heat Grate by tipping the Heat Grate up and sliding the manifold down between the Blower Assembly box and heat shield. Make sure the Heat Transfer Bar slides between the Blower Assembly box and heat shield, and rests on the thermal switch (*silver button*).
- **Step 5.** Align holes and bolt the Blower Assembly to the Heat Grate unit using supplied Philips head screws. **(Fig. 3)**
- **Step 6.** Route Cord out of the Blower Assembly on the proper side. Be sure to place rubber grommet in case opening. **(Fig. 4)**
- **Step 7.** Connect Cord wires to Blower and Switch wires by joining terminals. Connect Green Wires to each other. Connect White from Power Cord to Black from Fan. Connect Black from Power Cord to Black from Switch. *See wiring diagram for more info.* **(Fig. 5)**
- **Step 8.** Place Blower Vent Assembly on opposite side of Heat Grate from the Blower Assembly. Bolt to Heat Grate in same manner as Blower Assembly in Step 4. **(Fig. 6)**
- **Step 9.** Assemble Cover by sliding the two cover pieces together. Place Variable Speed Switch through hole in cover. Trim ends of Cover to fit into the fireplace opening. Place caps on each end of the Cover, making sure to use Cap with cord cutout on the side where the Cord exits the unit. **(Fig. 7)**
- **Step 10.** Slide assembled unit into fireplace. Use feet adjustment bolts on bottom of feet to level unit in fireplace. **(Fig. 8)**
- **Step 11.** Install doors on top of cover and plug Grate Heater power cord into 110v electrical outlet.

## Installation

*Incorrect installation or unheeded warnings could result in a serious fire, and loss of life and property.*

- Product is **NOT** designed for installation in “zero-clearance” fireboxes or mobile homes, or in conjunction with gas log sets.
- Inspect the chimney flue and fireplace for loose mortar, damaged brick, and creosote build-up. Contact a professional chimney sweep or building contractor for more information or repair.
- After assembly, place unit into fireplace opening, making sure to center unit in the opening. Use feet adjustment bolts to level unit.
- Route the blower cord to desired location. Plug in the cord and check for proper blower operation. See “Blower” section in Operating Instructions for explanation of switches.
- Unit will not run until the thermal switch reaches 120° F. If you wish to test the unit when finishing installation, heat the thermal switch (*silver disk on back of Blower Assembly*) with a lighter or torch after setting the variable speed switch on.

## Operating Instructions

### Fuel:

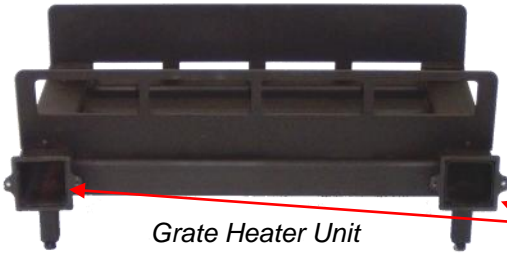
- **WARNING:** Never use gasoline or any flammable liquid to start a fire!
- Dry, seasoned hardwood is the safest and most efficient firewood. Recommended firewood age is 6-9 months.
- When wood is green and/or burned very slowly, it produces tar and other organic vapors, which combine with expelled moisture to form creosote. This creosote residue accumulates on the flue lining, and when ignited, can start an extremely hot chimney fire. The chimney should be inspected for creosote build-up twice monthly during the heating season, and cleaned as necessary.
- Make certain to keep wood well back from the door opening in order to avoid puncturing or placing extreme heat on the glass.
- Regulate the fire in order to avoid the dangers and unnecessary wear associated with extreme heat and uncontrolled burning.
- Ashes should be placed in a metal container with a tight fitting lid and retained there until all cinders have thoroughly cooled. Remember that bottom, sides, and handles of container may be very hot.

### Blower:

- Blower is operated by a thermostatically controlled variable speed switch. This means the blower will not turn on until temperatures reach 110°-120°F. Additionally, the unit will automatically turn off when temperatures drop below 90°F. To turn on, turn switch clockwise until desired fan speed is achieved. To turn off, turn switch counter-clockwise until a positive “click” is heard.
- In event of power failure, open doors fully to minimize heat buildup.
- **WARNING:** Disconnect power source prior to performing any maintenance or diagnostic operation on the blower or switches!

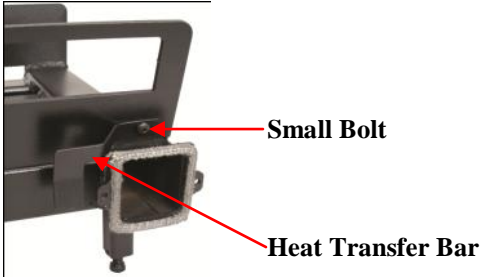
# Grate Heater

## Installation Instructions - Photo Addendum



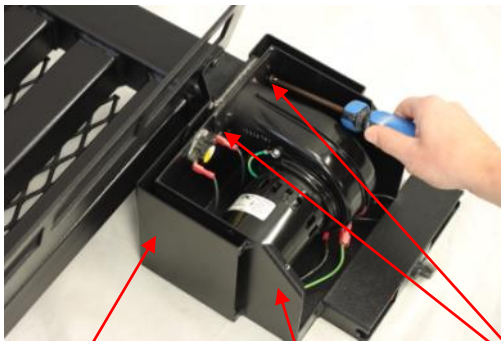
**Fig. 1**

Grate Heater unit oriented with manifolds facing towards you.



**Fig. 2**

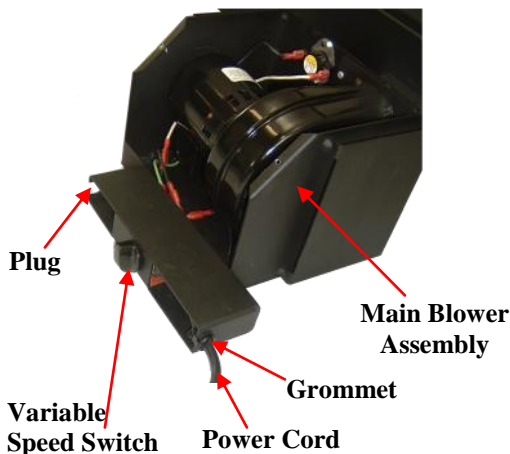
Attach Heat Transfer Bar by placing small bolt through hole in the Log Holder above the manifold and securing with nut.



**Fig. 3**

After determining which side to place the Blower Assembly, slide the manifold down between the Main Blower Assembly & Heat Shield. Attach Blower Assembly to Heat Grate unit with 2 of the supplied screws.

Heat Shield      Main Blower Assembly      Attach here



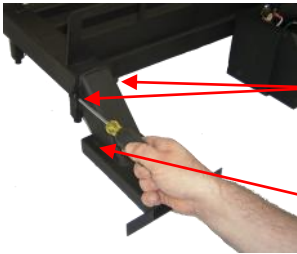
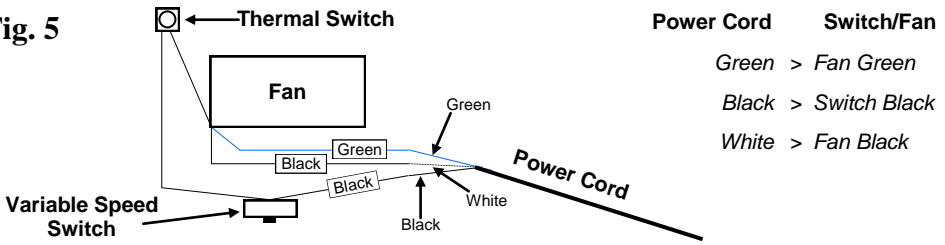
**Fig. 4**

Route the Cord out of unit on the proper side. This illustration is a right hand install, so cord comes out on the right side. Make certain to place the remaining plug into the round cutout on the opposite side of the variable speed switch.

# Grate Heater

## Installation Instructions - Photo Addendum (continued)

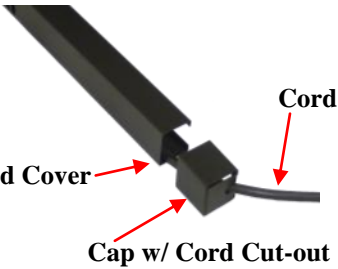
**Fig. 5**



**Attach here**  
**Vent Assembly**

**Fig. 6**

Attach Vent Assembly to Grate Heater Unit with remaining 2 Phillips screws.



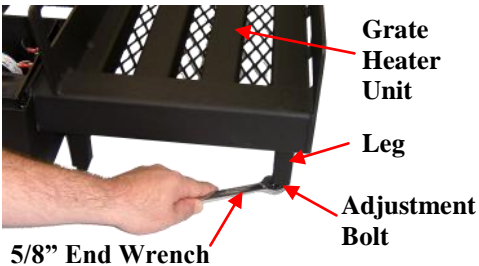
**Trimmed Cover**

**Cord**

**Cap w/ Cord Cut-out**

**Fig. 7**

Trim Cover to fit opening. Place end caps over trimmed ends, making sure to place the cord cut-out over the cord.



**Fig. 8**

Use feet adjustment bolts to level unit in fireplace. Bolts can be adjusted up and down with a 5/8" end wrench.

**NOTE:** Unit will not run until the thermal switch reaches 120° F. If you wish to test the unit before finishing installation, heat the thermal switch (silver disk on back of Blower Assembly) with a match, lighter or torch after setting the variable speed switch on.